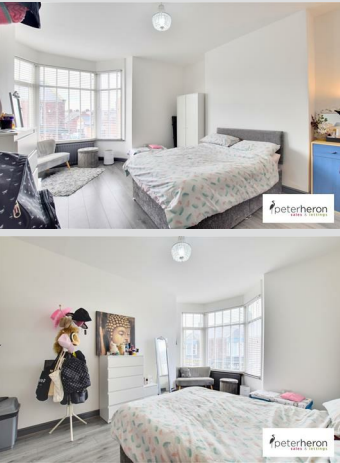




A well-presented, fully furnished double bedroom is available in a house share, ideally located just minutes from Sunderland Royal Hospital. The property features spacious shared areas including a modern communal kitchen, a comfortable living room, and a clean, well-maintained bathroom. The room comes fully furnished, and all bills are included in the rent (utilities, council tax, and Wi-Fi), making for hassle-free living. With on-street parking available and excellent transport links close by, this is a convenient and comfortable option for anyone seeking quality accommodation in a quiet, well-connected area.

MAIN ROOMS AND DIMENSIONS

Bedroom 16'1" x 12'4"



Double glazed bay window to front elevation and a radiator.

Lettings Important Info.

We endeavour to make our lettings particulars accurate and reliable. They should be considered as a general guide only and do not constitute all or any part of the contract. None of the services, fittings and equipment have been tested. Measurements, where given, are approximate and for descriptive purposes only. Prospective tenants and their advisers should satisfy themselves as to the facts, and before arranging an inspection, availability. Further information on any point of importance can be provided, if in doubt please seek clarification before proceeding with a tenancy. No person in the employment of Peter Heron Limited has any authority to make or give any representation or warranty whatever in relation to this property.

Lettings Viewing Appointment

To arrange an appointment to view this property please complete on online viewing request and await a response. Please note, we do not offer properties to be taken unseen

and you must view the property before being considered for an application.

Movein Costs

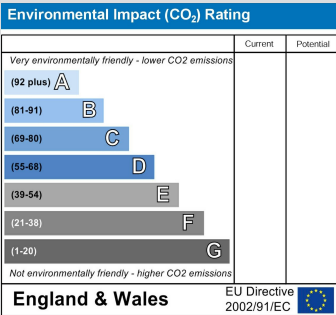
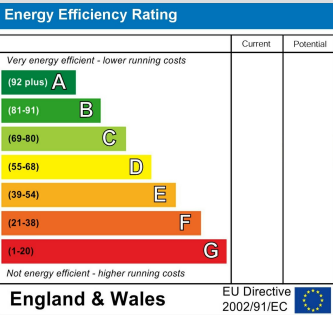
Before moving in you will need to pay one month's rent and a bond equal to a months rent.

Ombudsman

Peter Heron Estate Agents are members of The Property Ombudsman and subscribe to The Property Ombudsman Code of Practice.

Opening Times

Monday to Friday 9.00am - 5.00pm Saturday 9.00am - 12noon



Visit www.peterheron.co.uk or call 0191 510 3323

Tried. Trusted. Recommended. City Branch 20 Fawcett Street Sunderland SR1 1RH Fulwell Branch 15 Sea Road Fulwell Sunderland SR6 9BS